



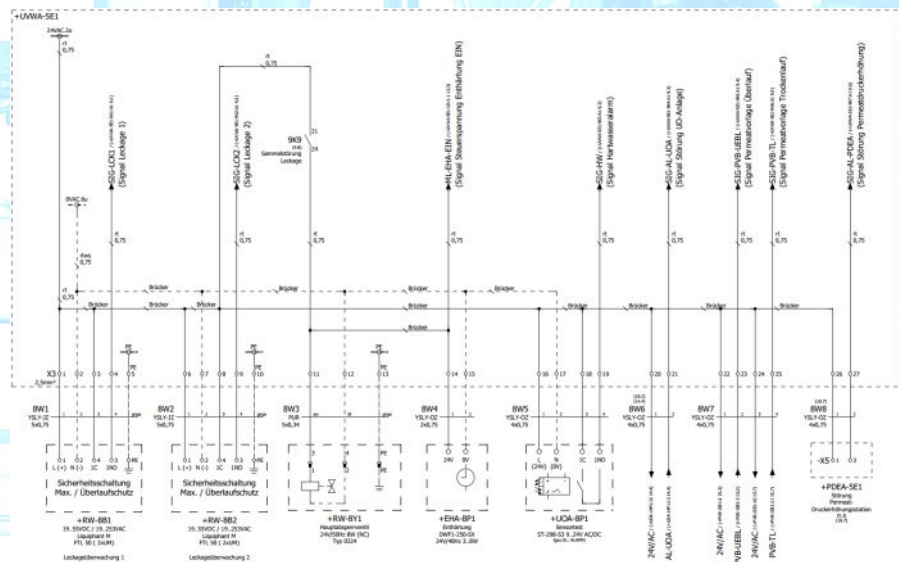
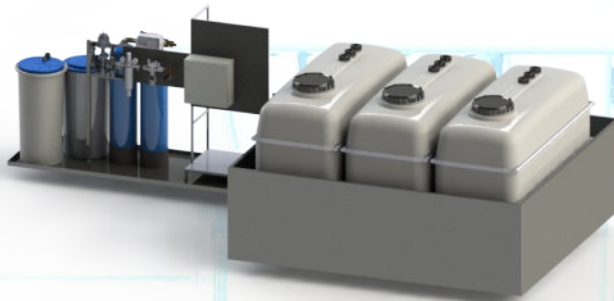
Water treatment systems for industrial parts cleaning



Project examples
Automotive

Project: Deionised water treatment plant for parts cleaning in the automotive industry

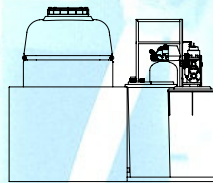
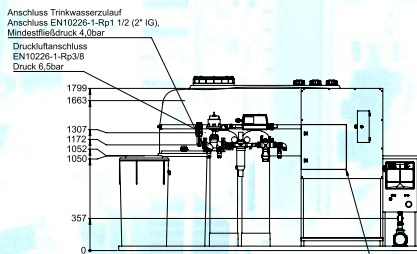
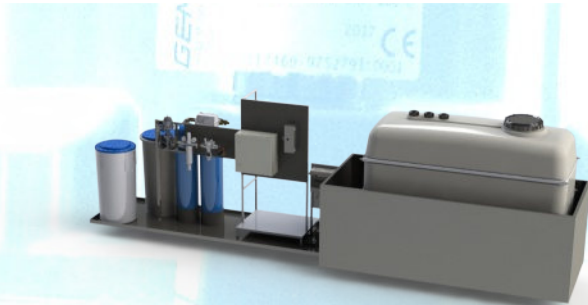
Manufactured according to customer specifications, including leak protection trays. Electrical cabling of all components according to the end customer's specifications.





Project: Deionised water treatment plant for parts cleaning in the automotive industry

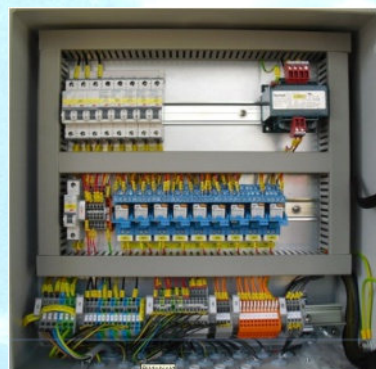
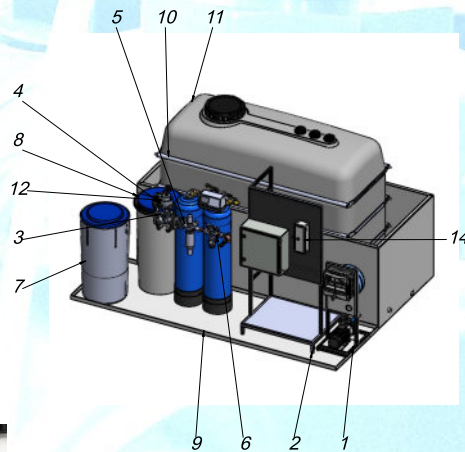
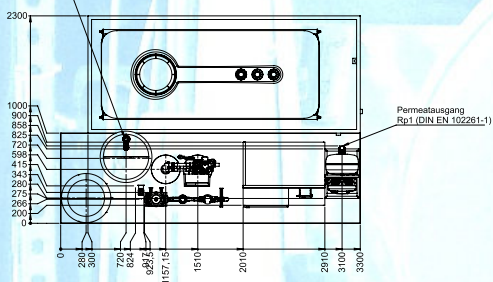
Manufactured according to customer specifications, including leak protection trays. Electrical cabling of all components according to the end customer's specifications.



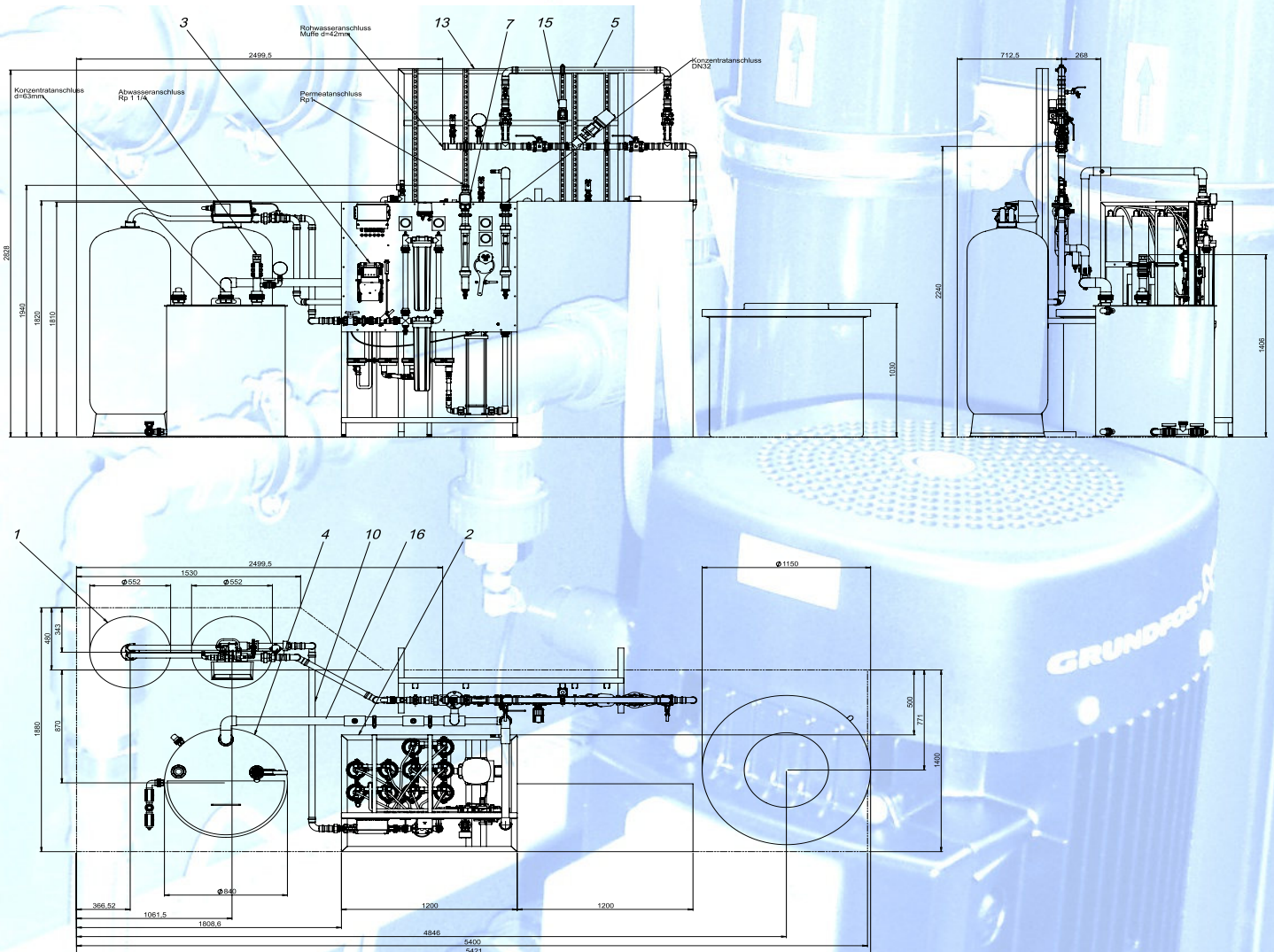
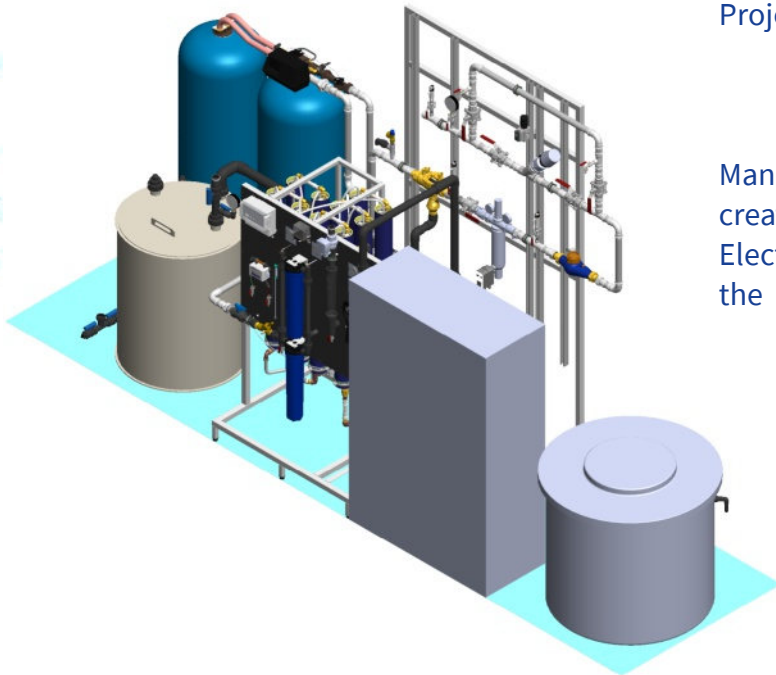
POS-NR.	Parallelanordnung MENGE	Nummer	BENENNUNG	MATERIAL
1	1	842343	Einzeldruckerhöhungsaggregat PEP-54-P, 400V/50Hz	-
2	1		Umkehrosenenanlage UON-80-S	-
3	1	Z00351	Montage folgender Baugruppen auf	-
4	1	VSD0001	512 Metall-Stizventil, 2/2-Wege, DN40, fremdgest.	Material <nicht festgelegt>
5	1	VNF0046	MS-Hauswasserstation HS10-1AA, R1, Honeywell	Material <nicht festgelegt>
6	1	VNS0059	Systemrenner Typ BA, STC-1, DN 25, PN 10	Material <nicht festgelegt>
7	1	0200030	Doppelpenthrungsanlage DWF1-250-SX	-
8	1	0100015	Abwasserhebestation 200/303, ohne Alarmkontakt	-
9	1	TRW0006	VA-Auffangwanne 3300x1000x50	1.4301 (X5CrNi18-10)
10	1	TRW0002	VA-Auffangwanne 3000x1300x1050	1.4301 (X5CrNi18-10)
11	1	TKV0006	PE-Vorratsbehälter VK-4000L, natur	PE hochdicht
12	1	Z00238	Wartungseinheit (Füllregler) Druckluft, G3/8	-
13	1	Z00390	PVC-Anschluss Rp1 anstatt da32mm	-
14	1	Z00870	VA-Sicherheitsgehäuse für Handränder	-

el. Spannungsversorgung
 Einspeisung: 3/N/PE 400V/50Hz
 Zuleitung: 5x2,5 .14mm² (bitte örtl. Vorschriften beachten)
 Steuerungsspannung: 24V/50Hz
 Anschlussleistung: ca. 1,7kW (+ Service-Verbraucher)
 Nennstrom: max. 7,5A (+ Reserve + Service-Verbraucher)
 Baueigene Vorschaltung: max. 3xVC18/C20 (bitte örtl. Vorschriften beachten)

Abwasseranschluss zur bauseitigen
 Entwässerung
 Anschluss EN10226-1-Rp1 (1" IG)



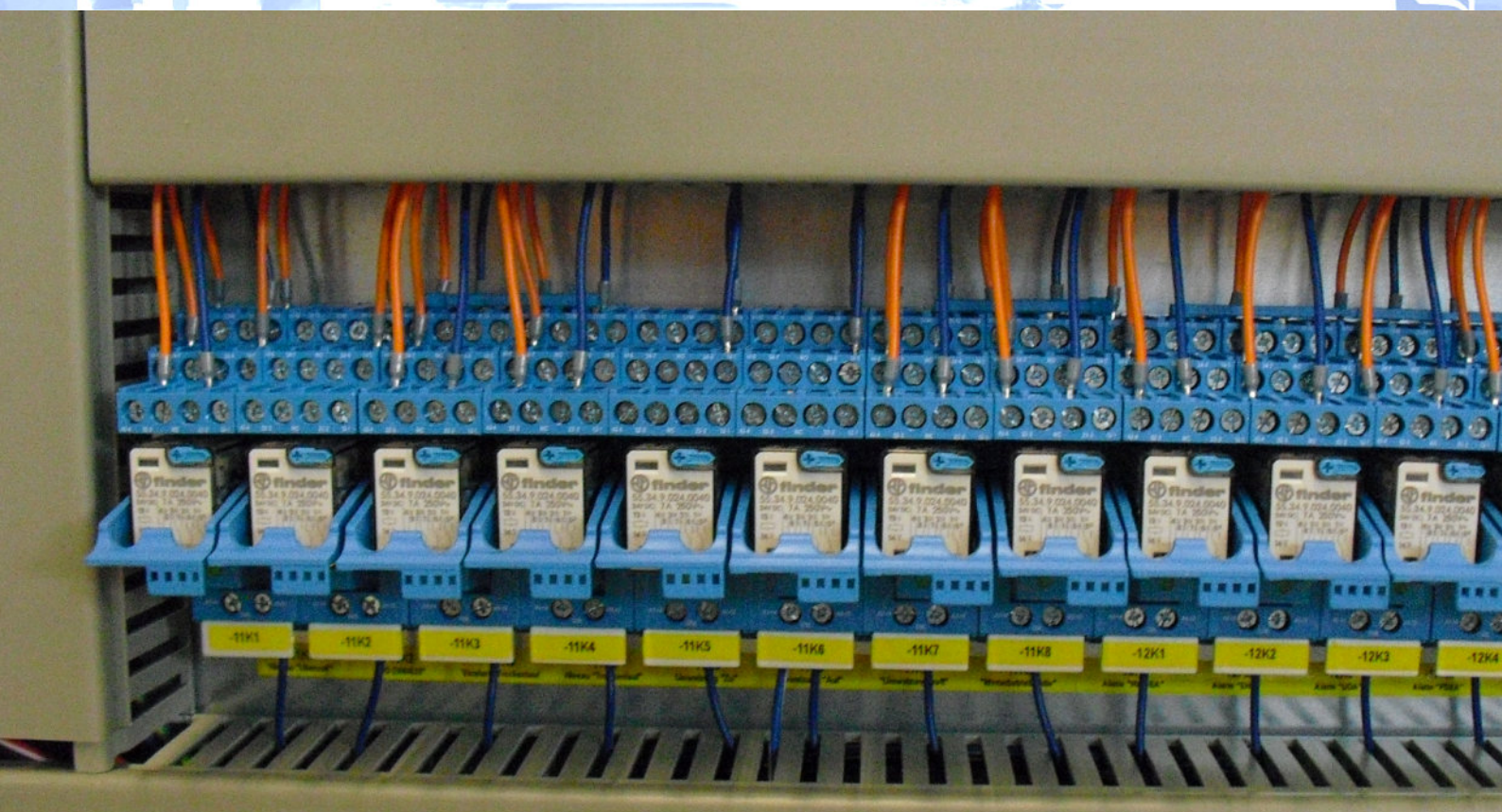
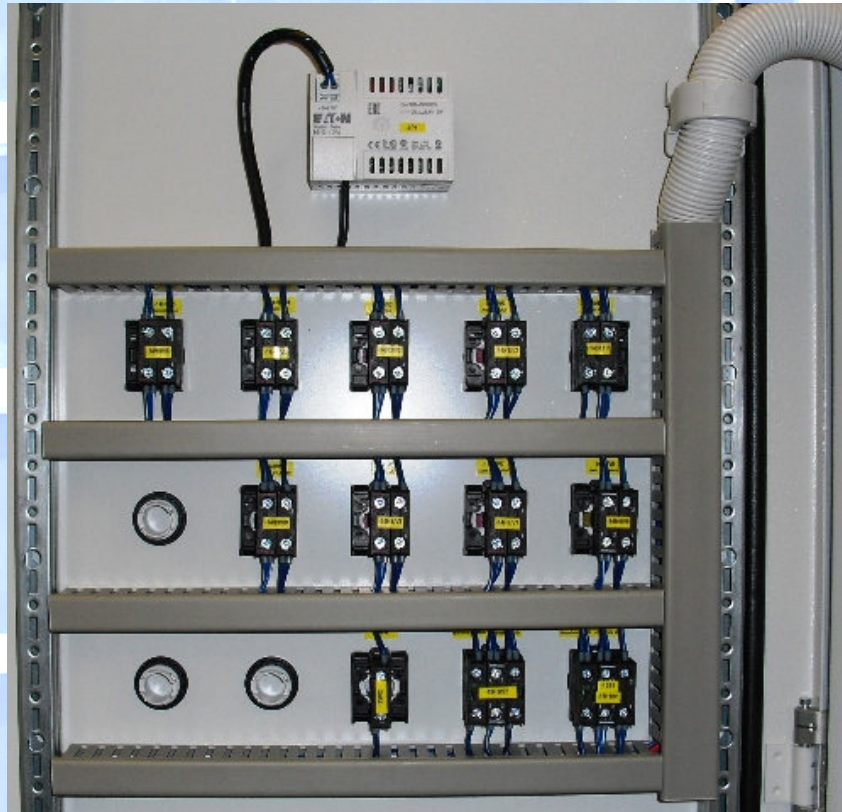
Manufactured according to customer specifications, creation of piping in stainless steel press system. Electrical cabling of all components according to the end customer's specifications.

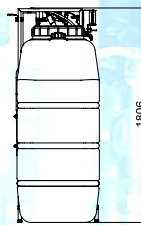




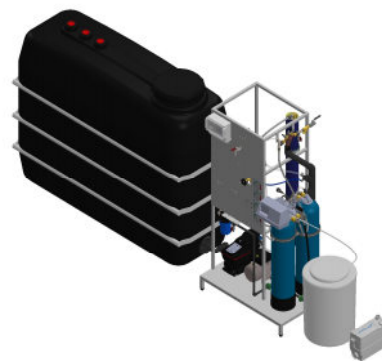
Project: MSR control cabinet of a deionised water treatment plant for the automotive industry

Project-specific switch cabinet construction in-house. Manufactured according to customer specifications. Electrical cabling of all components according to the end customer's specifications.



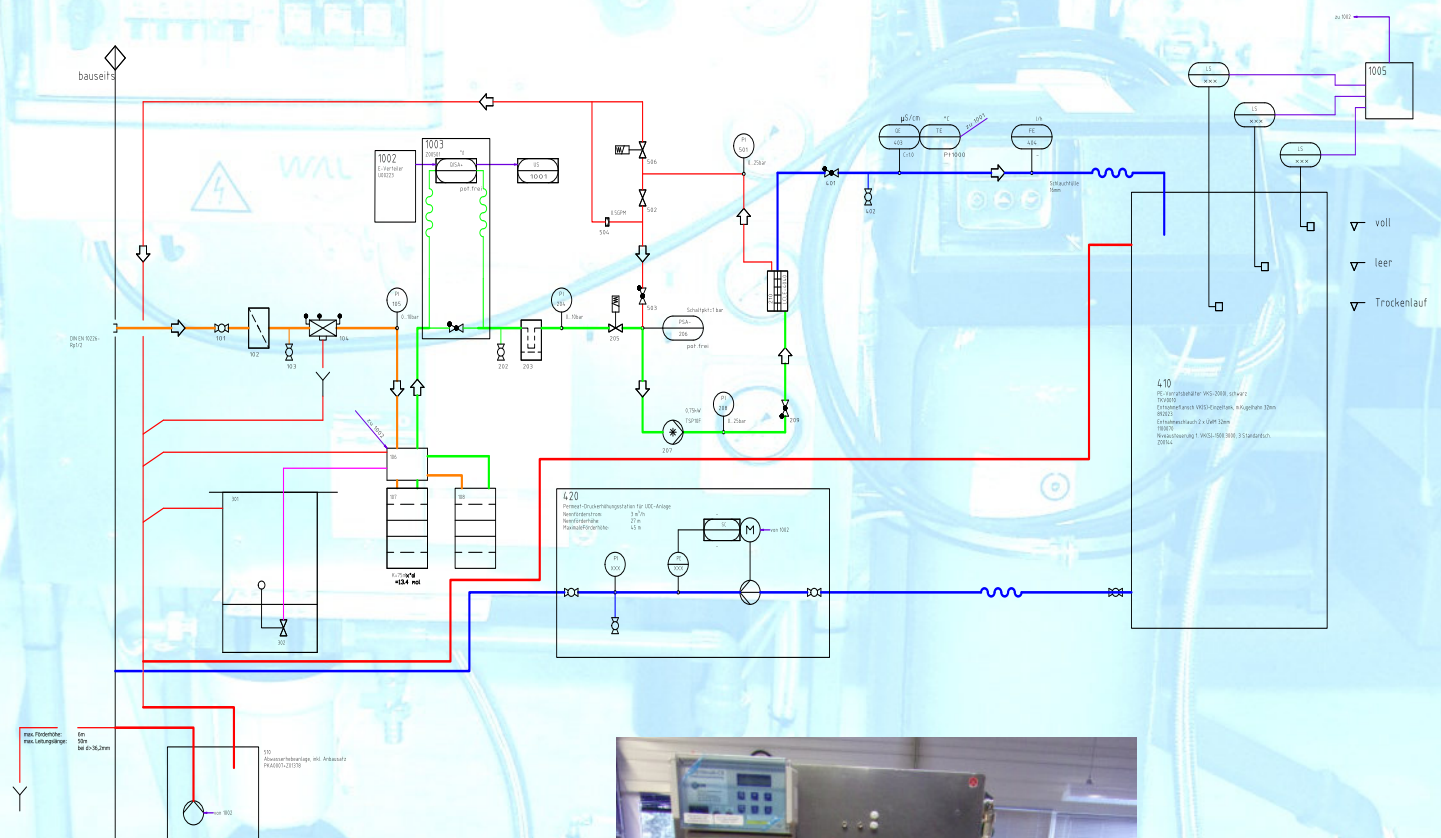
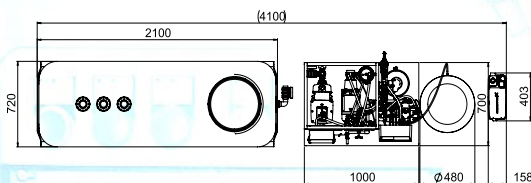


POS-NR	MENGE	Nummer	BEZEICHNUNG	MATERIAL	Länge
11		TKV010	PE-Vorstabhalter VGS-2000, mit Muffs Rp1	Materiel -nicht festgelegt-	
21		070008	UO-Kampfschutz UOC-D75300-L	-	
31		1100099	Pernmet-Druckerkonzentration für UOC-Anlage	-	
41		692023	Entnahmeflasch VW(s) Einzelzink, in Kugelhahn 32mm	-	
51		PKAD007	Abwasserentbeurteilung SOLDFIT C-3	-	



Compact units UOC, available at short notice

Compact water treatment units consisting of an inlet assembly, including system separator, optional single or double softening and reverse osmosis with a permeate capacity of up to 450 l/h. Expandable with extensive options, can be combined with our comprehensive range of accessories.



Notes

[illegible]



W.A.L. Wassertechnik GmbH **WasserAufbereitung Leipprand**



Einsteinstraße 13
72800 Eningen unter Achalm
+49 7121 82015-0
+49 7121 82015-290

www.wal.eu • info@wal.eu

Certified specialist company in accordance
with §62 AwSV (German Ordinance on the
Handling of Substances Hazardous to
Water)